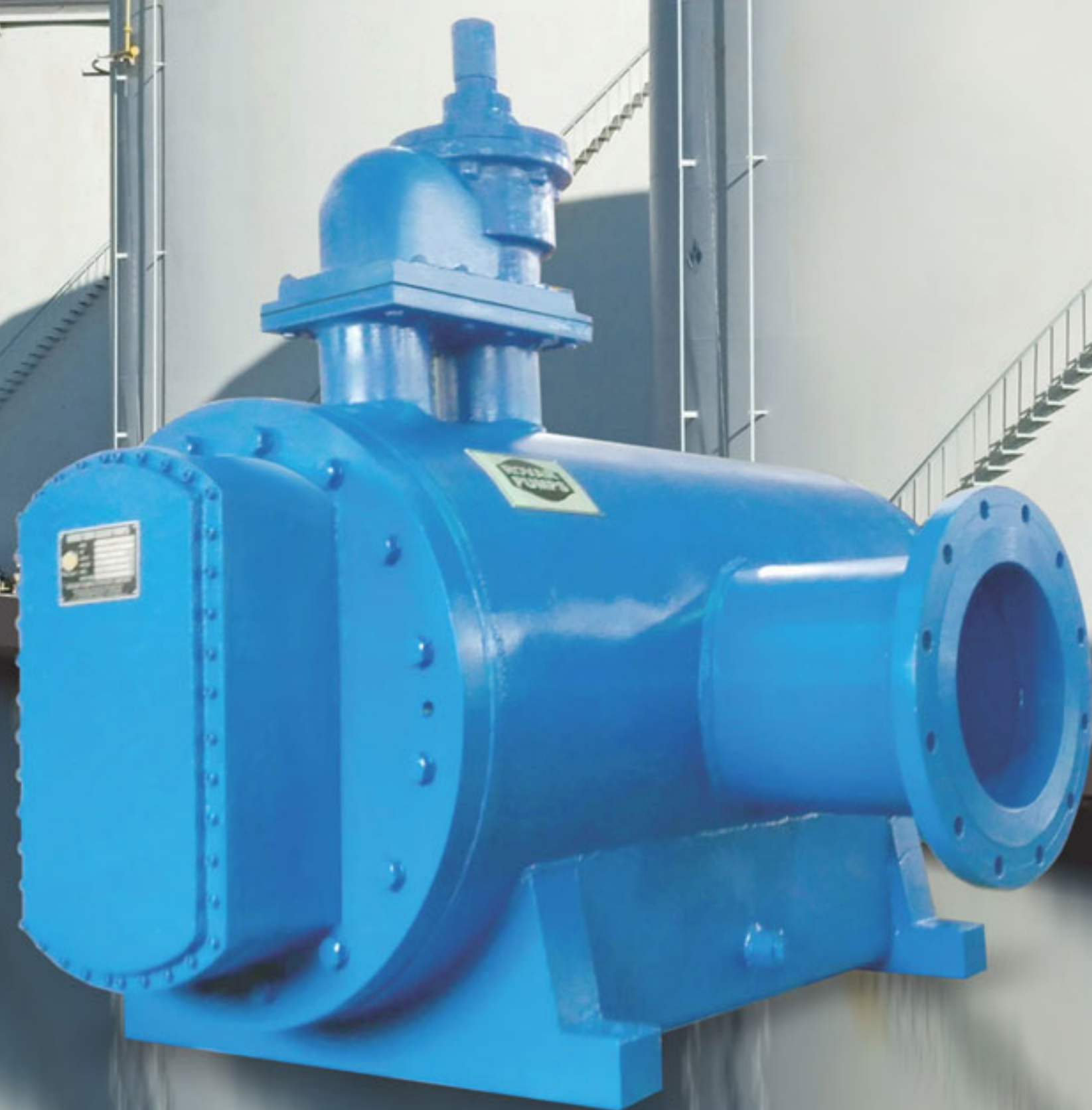


Rovar Pumps for Tank farms, terminals and refineries



**ROVAR TWIN SCREW PUMPS
CROSS COUNTRY PUMPS FOR TANK FARMS.**

Rovar Pumps manufacturing nine different type of positive displacement pumps under one roof and have complete end to end solutions for tank farms. Over many years of application engineering knowledge gained in handling liquids in challenging operating conditions. Rovar Pumps are engineered for high pressure, high flow rate, better wear resistance, improved corrosive resistance and improved efficiencies. Best material of construction and more precise machining techniques with concept of energy saving, occupational safety and reduction in operational costs are the advantages to tank farm owners and operators.

Oil terminal and tank farm installations have experienced a real boom over the past few years. New tank farms are being built world-wide to cover the growing demand for crude and

refined oil products. Innovative and affordable technology with more flexible pumping systems can make big contributions to a flexible, smooth and cost-efficient operation of oil tank farms.

Tank farms normally placed near by sea ports for easy loading & unloading of stored oils. In some cases the distance between tank farm & the ship more than 3 km. This long pipe lines have several bends, horizontal, vertical pipings, valves, meters and pass through uneven ground. Rovar Twin Screw Pumps - RTS series, are designed for long distance pumping. These long distance-cross country dependable pumps can work up to 35 bar pressure with flow rates as high as 4000 cum/ hr and cover a distance approximately 15 km & more pumping distance with specially designed pumps.

TWIN SCREW PUMPS - RTS SERIES

Rovar Twin Screw Pumps - RTS series are widely used in tank farms, apart from conventional centrifugal & gear pumps. RTS pumps offer many advantage while transferring stored oil products. Different oils with various viscosities, suction condition, higher discharge pressure, liquid with

entrained air, are efficiently handled by Rovar twin screw pumps. The versatile & insensitive to liquid viscosity variations, RTS pumps are well suited for tank farms and achieve flow rates to 4000 m³/h, pressures up to 50 bar and can handle corrosive materials, again at good efficiencies.

TYPICAL APPLICATIONS:

- Transfer pumps with different flow rate.
- Loading/unloading with wide range of capacity and viscosity.
- Circulation/blending from tank to tank and within tank.
- Operation at low or high pressure.
- Complete control in all kind of operational modes.
- Reduced installation costs for pipes & valves.
- High safety due to variable operation.
- Low pulsation and no mechanical beating.
- No fixed duty points.

ADVANTAGES:

- Extremely good suction capability
- Different sealing arrangement
- Axial flow pattern
- Uniform flow
- Insensitive to viscosity variation
- Can handle low or high viscosity
- No metal to metal contact, hence very less wear of parts.
- Low or high pump speed
- Low noise levels
- Suitable for lubricating & non lubricating liquids.

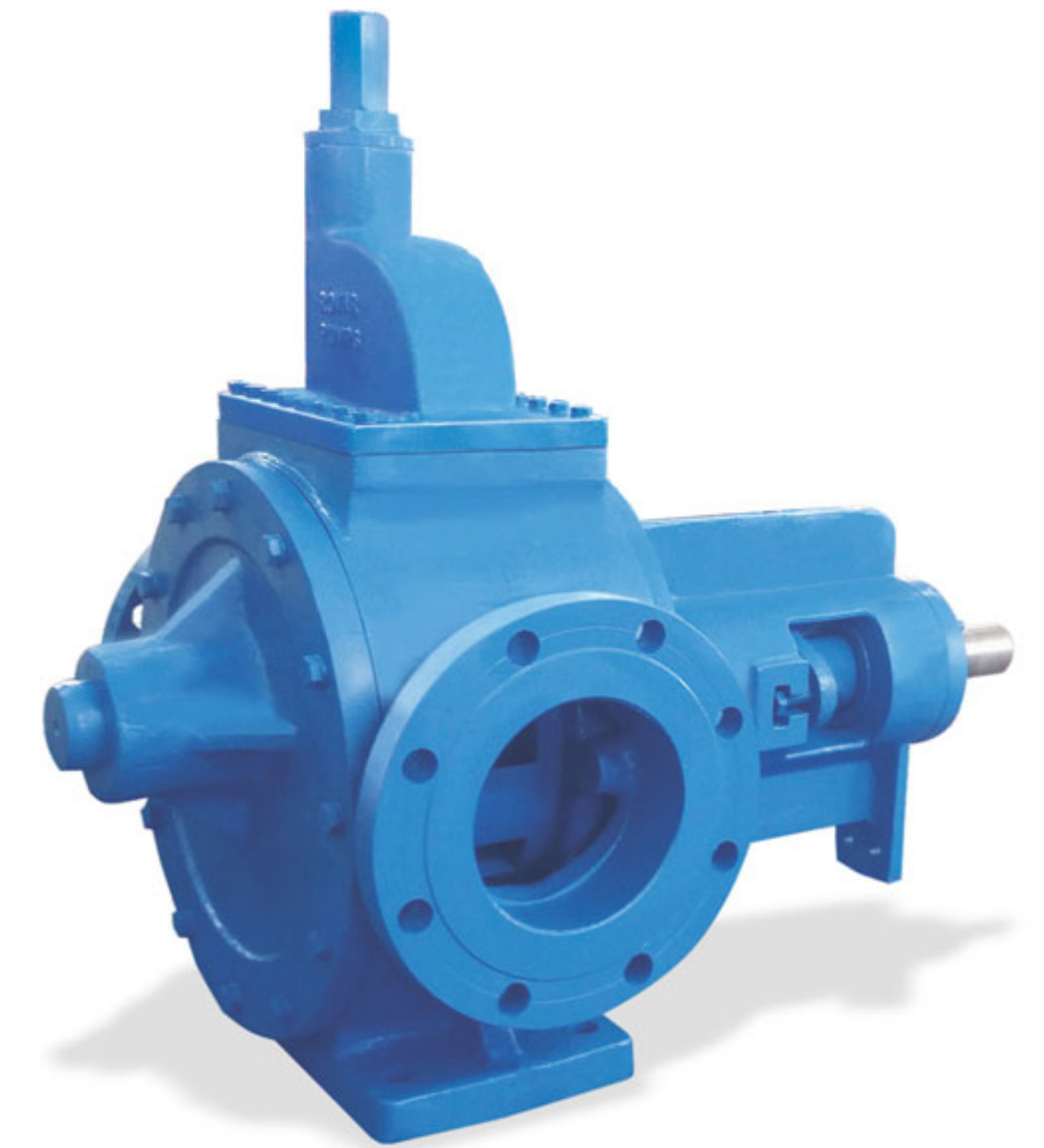


INTERNAL GEAR PUMPS - RIG SERIES

Rovar Internal Gear Pumps - RIG series are ideal for stripping, loading and unloading to lorry tankers. The flow rates are maximum up to 150 cum/hr at maximum pressure of 20 bar, viscosity up to 1,00,000 CST, temperature up to 375 deg centigrade. Rovar RIG series internal gear pumps are widely used for lorry tankers loading and unloading.

ADVANTAGES:

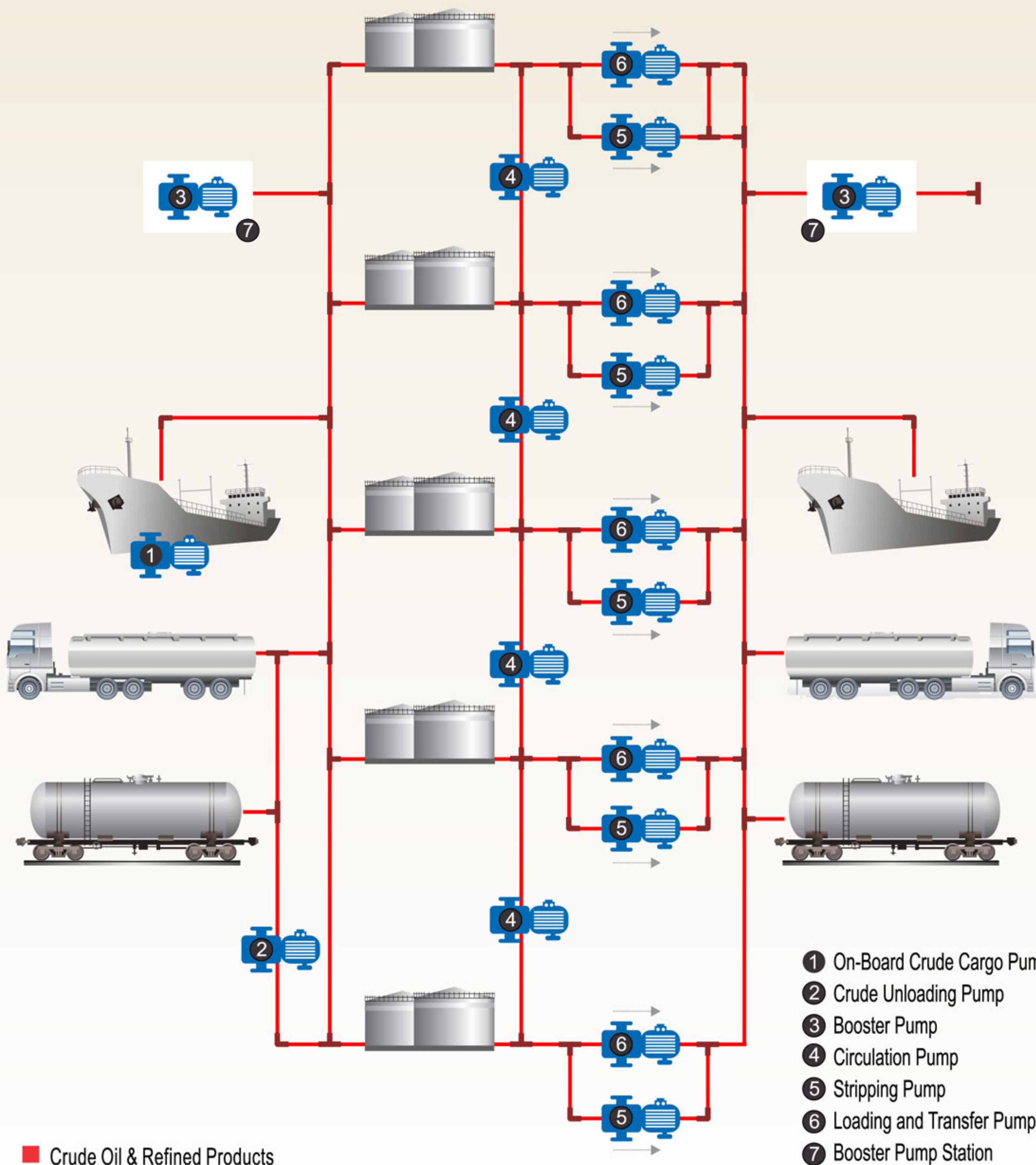
- External ball bearings to take care of radial forces.
- Self priming.
- Optimized for very low maintenance.
- Bidirectional with full performance.
- Non-pulsating & constant flow and no foaming.
- One shaft and shaft seal.
- Seal flexibility, mechanical seal, oil seal or gland packing.
- Built in safety relief valve a standard part to safe guard the pump and system against over pressure.
- Very low vibration & noise levels.
- Low pulsation and no mechanical beating.
- No fixed duty points.



EXTERNAL GEAR PUMPS - REG SERIES

Rovar external gear pumps REG series are used for general transfer duties similar to RIG pumps, Loading & unloading, Transfer of low or high viscous petroleum products. Rovar range of pumps are most dependable pumps, widely used in many process Industries, Tank farms, and Ships.





Manufactured by
ROVAR PUMPS
PRIVATE LIMITED
 Shinoli - 416 507 Maharashtra India
 Website : www.rovarpumps.com



An ISO 9001:2008 certified company

Mktg. offices

BELGAUM
 2nd Floor, 'B' Wing,
 'Geetanjali Plaza' (behind Axis Bank),
 21-2, Khanapur Road, Angol,
 Belgaum - 590 006 India.
 Tel.: +91-831-2485 450, 4201 063.
 Fax: +91-831-2485 451.
 E-mail : sales@rovarpumps.com

CHENNAI
 No. 10, 1st Floor,
 602, Annasalai,
 Chennai - 600 006 India
 Tel.: +91-44-2822 4170