



the most
dependable range of
self-priming centrifugal
pumps

End suction centrifugal pumps GRS



**ROVAR PUMPS
PRIVATE LIMITED**

Rovar End suction centrifugal pump GRS

Applications :

Rovar GRS range of end suction centrifugal pumps are ideal for handling aggressive organic & inorganic fluids in the chemical & petrochemical industries. These pumps are also used at refinery off-sites, hydrocarbon processing, paper & pulp industries, cement plants, mining industries, food & pharma industries, distilleries, leather industries, marine application, oil & gas, paint shops, sugar industries, seawater desalination plants, textile, absorption plants in environmental engineering, power stations, water & effluent treatment plants and other general industrial applications.

Typical liquids list:

Diesel, aviation fuel, crude oils, thermic fluids, solvents, other low viscous hydro carbons, sea water, etc.

Design:

End suction, horizontal, radially split, volute casing pumps in back pullout design, fitted with a radial impeller, single entry, single stage & designed in accordance with DIN 24256/ ISO 2858/ ISO 5199 with more than ten different models (hydraulic range) right model for the given application is possible for optimum performance.

Shaf seal:

All pumps can be supplied with either gland packing or mechanical seal. The mechanical seal shall be standard seal, cooled or uncooled, single acting or double acting. Cartridge seals also can be supplied as per application demand.

Flangs

according to ANSI B 16.5 class 150 & 300

Pressure retaining parts

safe design by computerised strength analysis and quality casting with corrosion allowance

Casing and impeller wear rings

GRS G - only casing wear ring
GRS E/C - no wear ring

Impeller nut

with helicoil for protection of threads

Shaft

Dry shaft. No contact with medium handled (due to confined sealing gaskets) hence no need for special material

Standard units

Fast delivery and small stock of spare parts ensured

Back pull-out design

When dismantling the pump, the casing can remain in the pipeline

Jack-bolts

for easy dismantling

Casing cover

cooling or heating possible

Gland packing

subsequent fitment of standard mechanical seal is possible

Rotor and bewring

rated for a shaft deflection below 0.05 mm and a bearing life of more than 17,500 operating hours

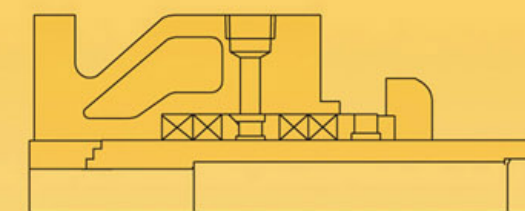
Volute

with low radial forces (double volute available, depending on size)

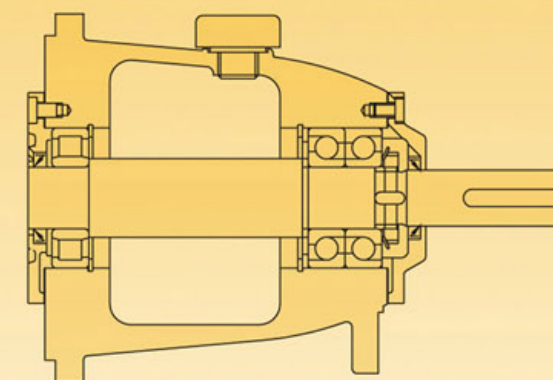
Constant level oiler

guarantees constant lubrication of the bearings and control of oil level

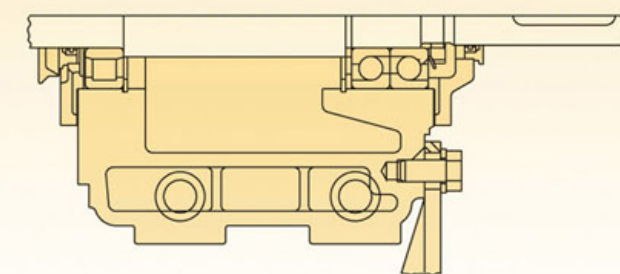
Optional features:



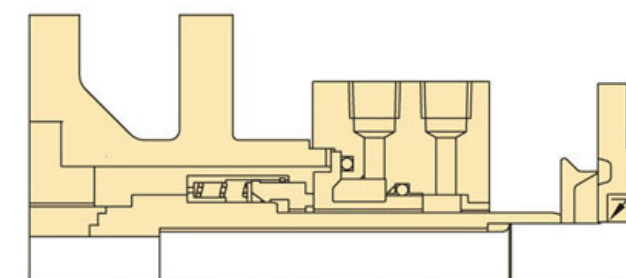
Shaft sealing chamber, intensively cooled ('Y' stuffing box)



Heavy bearing bracket for intensive loading

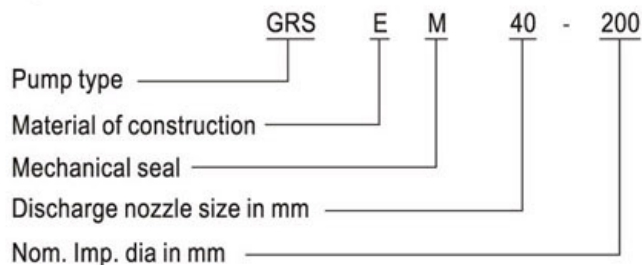


Heavy bearing bracket with cooling arrangement



Mechanical seal: single balanced (Double and tandem seals also available)

Designation:



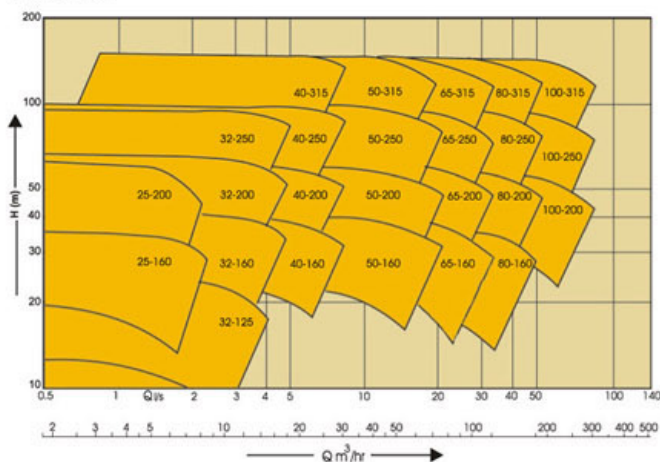
Operating data :

Pump sizes	DN	32 to 250 mm
Capacity	Q	Up to 950 Cum/hr
Head	H	Up to 150 m
Pressure	P	Up to 25 bar
Temperature	t	-40°C to +350°C

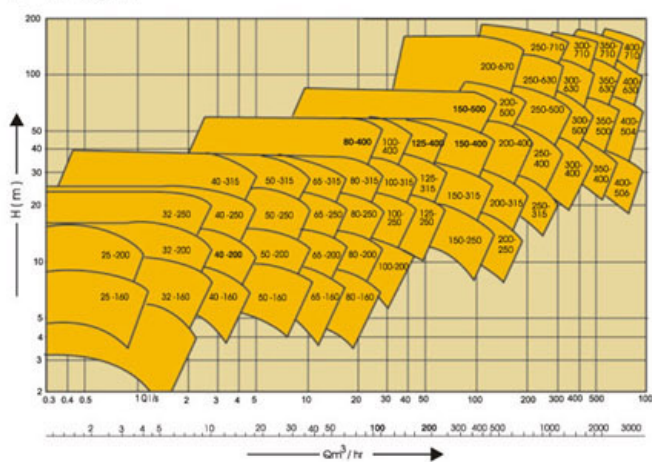
Drive: The prime mover shall be : Electric motors 50 HZ or 60 HZ, Diesel engine, turbine and air motors.

Family curves:

n = 2900 rpm.



n = 1450 rpm.



Material:

GRS series pumps can be offered in Cast Iron (C), Cast Steel (D) & Stainless Steel (E) Metallurgy

Part description	Standard Material of construction		
	C	D	E
Volute Casing	CI Gr. FG260	WCB	CF 8 M
Casing Cover	CI Gr. FG260	WCB	CF 8 M
Impelle	CI Gr. FG260	WCB	CF 8 M
Impeller Nut	CI Gr. FG260	CF 8 M	CF 8 M
Shaft	C 45	Type 431	AISI 329
Shaft Protection Sleeve	Type 316	Type 316	Type 316
Bearing Bracket	CI Gr. FG260	CI Gr. FG260	CI Gr. FG260
Bearing Bracket Lantern	CI Gr. FG260	CI Gr. FG260	CI Gr. FG260

*Depending on application other special executions are available.



Manufactured by
ROVAR PUMPS
PRIVATE LIMITED
 Shinoli - 416 507 Maharashtra India
 Website : www.rovarpumps.com



The company reserves the right to change any specification without prior notice

Your area dealer

Mktg. offices

BELGAUM
 2nd Floor, 'B' Wing,
 'Geetanjali Plaza' (behind Axis Bank),
 21-2, Khanapur Road, Angol,
 Belgaum - 590 006 India.
 Tel.: +91-831-2485 450, 4201 063.
 Fax: +91-831-2485 451.
 E-mail : sales@rovarpumps.com

CHENNAI
 No. 10, 1st Floor,
 602, Annasalai,
 Chennai - 600 006 India
 Tel.: +91-44-2822 4170

ABRP/GRS/SEP11